

Width x Height	609 x 508 x 457 mm
	34 kg
Ink and Paper Specifications	
Resolution	Up to 1600 x 1600 dpi
	Up to 3,600 pages/hr
	Up to 7,500 DL envelopes/hr
	Up to 215 x 431 mm with full bleed capability
Minimum (L x W)	107 x 76 mm
Maximum (L x W)	431 x 241 mm
Thickness	0.5 mm
	250 ml – Cyan, Yellow, Magenta; 500 ml – Black
	Up to 16.8 million colors
Performance	
Technology	
Ink tanks	
Design	
Print head cleaning and capping station	
Feed feeder	
Paper transport system with star rollers	
Postscript system fonts	
Features and Requirements	
Software update downloads via PC connection	
Ethernet PC interface	
Accessories	
Stickers (CS870)	
Printer management software	

Choose Neopost?

Neopost is a global leader in mailing solutions, shipping services and communications. We believe that people are the key to success. That's why our products and services are tailored to help your organization improve the quality of its interactions and bring people closer together.

With a focus on multichannel communications, we guide and empower our clients to interact in new and innovative ways. We advise you on how to achieve cost-cutting synergies. And we deliver global coverage with a strong local presence, offering you continual support on-site or online.

Neopost is present in 31 countries and has a network of offices in more than 90 countries. We promote responsible and sustainable development through our products and services and programs. And our 6,200 employees worldwide are committed to making your interactions more responsive and effective – offering you a competitive edge that will open up new opportunities.

Learn more at neopost.com

Specifications are subject to change without notice. Neopost and the Neopost logo are registered trademarks of Neopost S.A. All other trademarks are the properties of their respective owners. Powered by Memjet® is a trademark of Memjet Ltd. All rights reserved.

AIMS
AS-970C
MACH5



ampaigns

ter to
ect
st
e
velopes
g,
er piece
nting.

Quick Facts

- Prints in brilliant full color at a resolution of 1600 x 1600 dpi
- Operates at speeds up to 7,500 DL envelopes per hour for unmatched color throughput
- Automated print head maintenance system keeps print quality perfect
- Revolutionary technology reduces the cost per piece



AS-970C Mach5 presented with optional conveyor stacker (CS870)

Powered by **memjet**

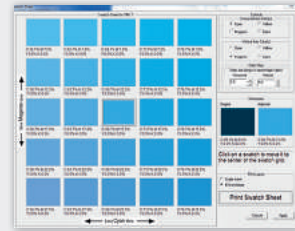
mColor BY NEOPOST

Neopost's optional mColor RIP & Workflow Software incorporates color management tools, production job presets, hot folders and the powerful Harlequin® RIP engine into one workflow product. mColor delivers predictable and repeatable standardization of color and improves overall image quality.

With its easy-to-use job workflow interface, mColor provides the tools to automate production, manage jobs and deliver professional color quality control to the Neopost AS-970C Mach5.

Advanced Color Management and Spot Matching

The mColor RIP provides edit spot color without being expert. Adapt spot color to existing color specifications. mColor identifies colors in automatically. Users can th out color swatches on their for comparison, adjust the then print the finished item



ICC Profiles

Built in ICC color profiles ensure the best possible output on a variety of papers. The examples shown compare the difference one file printed on the same envelope, using the Windows driver versus the mColor